



Engineered Performance Features



QUICK & EASY START-UP

With the flip of a toggle switch the Super Shot will be ready to operate in less than an hour. Shut down, at the end of the day, is just as easy.



HEATED HOSE

The low voltage electric heated hose heats material to application temperature within 45 minutes. The hose has the longest working radius in the industry, a 360° swivel, protective sleeve, & a repairable hose & wand.



Automatic Agitator Shut-Off & Splash Proof Lid

Shut offs are incorporated into the lid, hose, wand, pump, burner, & electrical controls.



Integrated Operator Control System

Controls operate the entire unit and override possible operator error. Integrated control box houses all the gauges, switches, & engine controls.



Optional Compressor

Compressor runs air lance that is used to clean dirt & debris out of cracks, increasing crack sealing efficiency.



Optional Engine Cover

Protects engine from the elements, vandalism, & theft.



Efficient Burner

Burner is positioned safely within the frame providing protection & ample ground clearance. Time saving electric overnight heater option available.



Low Profile

Low center of gravity provides easy loading, yet has ample unobstructed ground clearance for safe towing over the most rugged road conditions.

Engineered Performance Options

Crafcro offers many Engineered Performance Options to increase production, save labor and lower operating costs. The versatility of the Super Shot units allows you to specify options in your time frame, from the initial placement of the order all the way through production. Most Super Shot units have been engineered to accept any option, whether it's an autoloader, compressor, light bar or fire extinguisher. These options will enhance production while increasing safety and security.



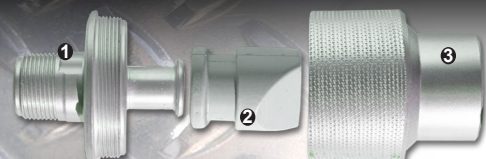
Engine covers and battery boxes protect the engine from the elements and adds security. The autoloader increases production, adds safety and decreases operator fatigue. The overnight heater is an on the job must if you want to reduce start up time. The light bar is for added safety to direct traffic and increase driver awareness. No other machine comes as complete or as diversified.



- Engine cover
- Gravity Feed
- Arrow Board Kit
- Surge Brakes
- Engine w/ Guages
- Autoloader
- 50 or 70 CFM Compressor
- Custom Paint
- Hitch Selection
- Electric Plug Selection
- Hitch Extension
- Cab Brake Control
- Break-away Battery w/charger
- Locking Battery Box
- Light Bar
- Overnight Heater
- Fire Extinguisher - 10 or 20 lb.
- Tool Box
- Safety Hooks
- Mud Flaps
- Spare Tire Kit
- Strobe Light

Engineered Tools

Sealing Tips and Material Handling Tools



Super Shot Drip Stopper

Use with Crafcro Super Shot sealing tip. Stops sealant drip once wand trigger is released.

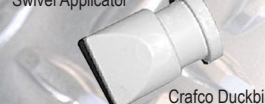
- PN# 27114 Tip Adapter
- PN# 50270 Duckbill Valve
- PN# 27115 Shroud - Tip Adapter



Swivel Applicator

Swivel Applicator

Use with Super Shot Melter & E-Z Pour Melters with or w/o Drip Stopper.
PN# 27120 3" Swivel Applicator
PN# 27130 4" Swivel Applicator



Crafcro Duckbill

Crafcro Duckbill PN# 50270

Use with Super Shot Melter wands to prevent dripping of material.



Crafcro Sealing Foot / Flush

Crafcro Sealing Foot / Flush

Used for random asphalt and concrete cracks.

- PN# 27154 Sealing tip/ft assembly 1/4" flush
- PN# 27155 Sealing tip/ft assembly 3/8" flush



Crafcro Sealing Foot / Protruded

Crafcro Sealing Foot / Protruded

Used for straight asphalt and concrete joints.

- PN# 27159 Sealing tip/ft assembly 1/4" protruding
- PN# 27160 Sealing tip/ft assembly 3/8" protruding



Crafcro Joint Sealing Tip

Crafcro Joint Sealing Tip

Use for straight asphalt and concrete joints.

- PN# 27146 Sealing tip assembly 1/4"
- PN# 27147 Sealing tip assembly 3/8"



Crafcro Round Sealing Tip

Crafcro Round Sealing Tip

Multi-purpose random cracks and joints. Use with a squeegee for most applications.

- PN# 27170 Sealing tip assembly 3/8"
- PN# 27171 Sealing tip assembly 1/2"



Crafcro Applicator Disk

Crafcro Applicator Disk

Used for overbanding, great labor saver.

- PN# 27162 3" Disk Assembly
- PN# 27163 4" Disk Assembly
- PN# 27164 6" Disk Assembly

Crafcro Heavy Duty Squeegee w/Aluminum Handle PN# 27199

Use for leveling crack sealant and where a sealant over band is recommended.

Crafcro Replacement Blade PN# 27195 4" x 18" x 3/8"

Crafcro Heavy Duty Compact Squeegee w/ Aluminum Handle PN# 27245

Crafcro Heavy Duty Compact Squeegee w/ Wooden Handle PN# 27245W

Use for leveling crack sealant and where a sealant over band is recommended.

Crafcro Replacement Blade PN# 27241 2-1/2" x 17" x 3/8"

Crafcro Pour Pot with Wheels PN# 40200

Use to apply a uniform band of sealant to a crack or joint. Wheeled for ease of use. Gravity feed with shut off lever.

Crafcro Hand Held Pour Pot PN# 40201

For application of thin crack sealant to a joint or crack. Gravity feed with shut off lever.

Crafcro Detack is an economical, biodegradable liquid from Crafcro that eliminates sealant tack when sprayed onto freshly applied hot pour sealant.



Crafcro Heavy Duty Squeegee



Crafcro Heavy Duty Compact Squeegee



Crafcro Pour Pot with Wheels



Crafcro Hand Held Pour Pot



Sourcewell

Awarded Contract

Contract #080521-CFC

Your local Crafcro Representative:



crafcro.com

6165 W. Detroit St., Chandler, AZ 85226 • Phone: (602) 276-0406 • Fax: (480) 961-0513

Super Shot Melter/Applicators

Crafcro Engineered System



Delivering Confidence Through Innovation, Quality and Value Since 1976

SUPER SHOT MELTERS

A PART OF THE CRAFCO PAVEMENT PRESERVATION SYSTEM

Crafco's total **Pavement Preservation Systems** include **Engineered Performance** Applicators and Sealants. Although all our melter/applicators work well with all brands of hot pour sealants, we recommend our **Performance Verified** sealants for your next project. All sealants are not alike; sealant must be engineered for the proper use and climate. To assist in selecting the right system for your specific application, consult the sealant selection guide on the Crafco website or consult your local authorized Crafco Systems representative. Crafco Pavement Preservation Systems represent products that are 100% recyclable, from the containers that they are shipped in to the products themselves. Preserve and protect with Crafco Preservation Systems.

Engineered Performance Design

Crafco Super Shot Melter/Applicators **Engineered Performance** answer today's challenges of high energy costs and small budgets with innovative features. Available in three sizes to match budgets and job criteria, Super Shot machines get the job done correctly, quick, and economical. No other machine on the market today can match Crafco's Engineered Performance System Machines.

Engineered Efficiency. Crafco's Super Shot engineered pump is mounted inside the melter, eliminating material recirculation, outside plumbing and high-pressure lines. By eliminating the need for re-circulation, the pump runs only when material application is needed making this an "on-demand" system, this increases pump life and operator safety.

Additionally, an internally mounted pump requires no packing, eliminating maintenance. Less maintenance in the shop means more production on the job, more profit and less costs.

Engineered Options and Features. Standard Engineered Features makes the operation of these melters the safest and the easiest machines to operate. Many of the other features reduce labor and operating costs; the most impressive being the Super Shot Melter Engineered Options. Design the machine you want with these options. For example, add an optional industrial air compressor and save the cost of running an additional engine and tow vehicle. With over 20 available options you will save time, money and manpower.

Engineered Safety



Super Shot Melter/Applicators are loaded with standard safety features designed to protect the operator and the public. In addition to standard safety features there are optional engineered features such as the autoloader, which keeps the operator clear of hot sealant and adds efficiency to the process. Rear controls keep the operator away from traffic on both sides of the unit and the bearing hose boom reduces operator fatigue. Anti-splash lids with safety shut offs protect the operator from sealant splash. Review the innovative features of Crafco Melters and you will find these machines to be the most safely engineered melters available.

- 1 Angled Loading Lid
- 2 Anti-Splash Lid
- 3 Low Profile Loading Height
- 4 Hot Oil and Sealant Shut Down
- 5 Manual Record Box
- 6 Lid Agitator Shut Off Switch
- 7 Bearing Boom
- 8 Hose Cover
- 9 Low Curb Height
- 10 Hitch Extension
- 11 Quiet Operation
- 12 Curbside Controls
- 13 Heat Transfer Overflow Tank
A jacketed melter with no overflow tank may cause ground contamination
- 14 LED Lights Standard

Additional features not indicated: Safety Chains, Breakaway Switch, Light Board, Fire Extinguisher, Auto Shut-Off, Safety Manual, and Autoloader.



THE MOST TECHNOLOGICALLY
ADVANCED MELTER/APPLICATORS
AVAILABLE



Super Shot 60

The Crafco Super Shot series melter/applicators represent the most technologically advanced melter/applicators available. These state-of-the-art machines offer the ultimate in efficiency and ease of use. The digital control features of this equipment accurately control and regulate the heating temperature of the sealant and transfer oil. The patented internal pumping system requires no clean out and features a hydraulic flow rate adjustment. The internal pump only operates when the operator activates the micro-switch on the applicator wand. With "On Demand" pumping there are no valves, fewer moving parts and no hose pressure build up. Super Shot melters will out-perform any comparable sized machine available. Crafco offers a one-year warranty, various options, and many safety features, making these machines the greatest value with the highest productivity. The Crafco Super Shot Melters are the most efficient and easy to use melter/applicators available today!

There are three sizes to choose from. The Super Shot 60 is a 60-gallon capacity unit, which features automatic digital controls. It is propane fired, with a heated hose and wand. This machine is designed for use on projects under 2,000 pounds of sealant per day. The Super Shot 60 is also available as a skid mount.



Super Shot 125
with Compressor

The mid-sized 125-gallon capacity Super Shot 125, offers the best versatility. Ideal for medium to large sized projects, this unit is diesel powered, available with an optional compressor or a labor saving Autoloader. This is our most popular municipal unit.

The oversized 250-gallon Super Shot 250 is designed for large projects. This machine will out-perform any melter in its class and is available with many standard options.

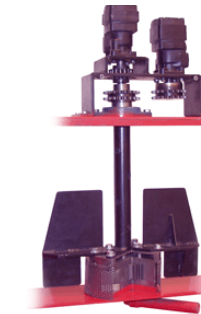
Ergonomically Engineered Loading Features:

- Splash proof lid
- Automatic agitation shut-off
- Fume free environment
- No operator back strain
- Light weight loading lid

Choose your size,
choose your
options!



Longer Pump Life • Efficient & Aggressive Agitation



The patented pump technology of the Crafco Super Shot melters is what makes the Super Shot the most productive and lowest maintenance melter in the industry. The Crafco patented pump is mounted inside the sealant tank. Mounting the pump inside eliminates material recirculation, outside plumbing, and high-pressure lines, while decreasing pump wear. The Super Shot pump will last many times longer than a conventional pump. Internal pumps require no packing which eliminates maintenance and results in more production on the job.

Super Shot 250 with Autoloader



Specifications

| | Super Shot 60 Propane | Super Shot 125 | Super Shot 250 |
|------------------------------|--|---|---|
| Dimensions | 110.25" L / 62" W / 72" H | 138.25" L / 68" W / 83.25" H (125DC - 152" L / 68" W / 83.25" H) | 174" L / 91.25" W / 81" H |
| Shipping Weights | 2,200lbs / 998kg - Actual | 2,800lbs / 1,270kg - Actual (125DC - 4,020lbs / 1,823kg - Actual) | 5,860lb / 2,658kg - Actual |
| Gross Weight | 3,200lbs / 1,451kg | 5,200lbs / 2,538kg / Approx. (125DC - 7,000lbs / 3,175kg - Approx.) | 9,900lbs / 4,490kg - Approx. |
| Material Capacity | 58 gal / 220 liter | 133 gal / 503 liter | 250 gal / 946 liter |
| Melt Rate | 480 lbs/hr | 1,064 lbs/hr | 2,000 lbs/hr |
| Heat Transfer Oil | 21 gal / 79 liter | 34 gal / 128 liter | 49 gal / 185 liter |
| Tank Construction | Double Boiler | Double Boiler | Double Boiler |
| Tank Opening | 12.25" x 15" / 311.15mm x 381mm | 14" x 18" / 355.6mm x 457.2mm | 16" x 24" / 406.4mm x 609.6mm |
| Loading Height | 50" / 127cm | 58" / 147.3cm | 58" / 147.3cm |
| Heat Input | 180,000 Btu | 250,000 Btu | 290,000 Btu |
| Diesel Fuel Capacity | | 26 gal. / 98 Liter (125DC - 32 Gal. / 121 Liter) | 32 gal. / 121 liter |
| Propane Capacity | 100lbs / 45.3kg | | |
| Hydraulic Oil Capacity | 26 gal. / 98 Liter | 26 gal. / 98 Liter (125DC - 32 Gal. / 121 Liter) | 32 gal. / 121 liter |
| Engine Standard | Kohler Mod. Ch2015 17HP@360RPM | Three Cyl. Isuzu Mod 3CH1 Tier 4 Final 25.4BHP @ 3,000RPM | Three Cyl. Isuzu Mod 3CH1 Tier 4 Final 25.4BHP @ 3,000RPM |
| Engine Option (w/Compressor) | N/A | (53 cfm comp.) Three Cyl. Isuzu Mod 3CD1 33BHP @ 3,000RPM | (53 cfm comp.) Three Cyl. Isuzu Mod 3CD1 33BHP @ 3,000RPM |
| | | (70 cfm comp.) Three Cyl. Isuzu Mod 3CD1TK 41.6BHP @ 3,000RPM | (70 cfm comp.) Three Cyl. Isuzu Mod 3CD1TK 41.6BHP @ 3,000RPM |
| Axle Capacity | 3,200lb. Torsional / 1,451kg | 5,200lb Torsional / 2,359kg (125DC - 3,500lb Torsional / 1,587kg) | 5,200lb Torsional / 2,359kg |
| Tires | ST185/80 D-13 | ST225/75R15 (125DC - ST205/75 R14) | ST225/75 R15 |
| Air Compressor (Optional) | N/A | 53.8CFM @ 125 PSI / 100 CFM @ 100PSI | 53.8CFM @ 125 PSI / 100 CFM @ 100PSI |
| Surface Area Material Tank | 2,538in ² / 16,347cm ² | 4,267in ² / 27,529cm ² | 6,632in ² / 42,787cm ² |
| Surface Area Oil Tank | 3,335in ² / 21,516cm ² | 5,244in ² / 33,832cm ² | 7,655in ² / 49,387cm ² |
| Ratio of Tank Surface Area | 1.31:1 | 1.22:1 | 1.15:1 |
| Controls | Standard Super Shot | Standard Super Shot | Standard Super Shot |
| Control Location | Hydraulic Rear, Control Box Curb Side | Hydraulic Rear, Control Box Curb Side | Hydraulic Rear, Control Box Curb Side |
| Hose Style | Electric | Electric | Electric |
| Wand Style | Electric | Electric | Electric |
| Hose Compartment | No | No | No |
| Material Recirculation | No | No | No |
| Boom | Dual Pillow Block Bearings | Dual Pillow Block Bearings | Dual Pillow Block Bearings |
| Burner Box | N/A | Front Panel Removable | Front Panel Removable |

For bid specifications go to
crafco.com

CRAFCO ENGINEERED SUPER SHOT MELTERS ARE BUILT TO LAST